



***azim-tav***<sup>®</sup>

**REARING CAGES**

AZ1000 & AZ1200

[www.azim-tav.com.tr](http://www.azim-tav.com.tr)

## AZIM-TAV AZ1000 & AZ1200 REARING CAGE SYSTEMS



### SECTION

Az1200 and AZ1000 rearing cage system have a long working life and space saving design. AZ1200 and AZ1000 models are available in wire and sheet metal materials. All of the metal and wire parts has a galvanized covering against corrosion with maximum protection. Low-cost cultivation is achieved by the high requirements of the cage in accordance with the technique.



### THE CAGE

The mainframe construction is supported with U profile legs, which are placed each 1,2 m. And also one cage is one section. The cage construction gives the possibility because of its modular form to build up from 3 tiers to 8 tiers without grid floor (catwalk) and until 150 m length. The depth of a single chamber is 630 mm. The front size of AZ1000 is 1000 mm. AZ1200 has a front size of 1200 mm. The base wire is placed on 8mm galvanized coated shaft bars. The base of the cage is steel mattress in the scale of **17x17**. Even a one day-old chick can walk around the base floor **without an extra peace**. There are 2 fixed covers in each cage and one inwardly opening cover for AZ1200. The inward opening cover which is in the middle of each cage makes it easier to reach the chicks spreading to any area of the cage. There are 2 inwardly opening cover for AZ1000. Covers are easily fixed to self-form pole and can not be opened without human factor.



## FEEDING SYSTEM

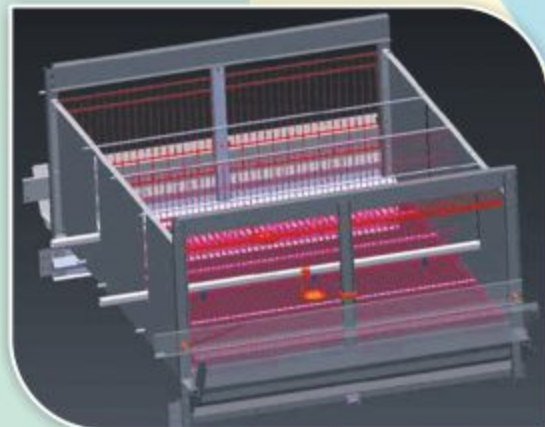
Feeding can be made by chained mechanism and by cart . We prefer cart feeding system for the best result. The advantages are excellent production results , low maintenance , flexibility and safety . It has a feeding device which you can easily adjust the feeding grade. ( 0,5-3 cm ) . Deep feeding channel prevents the feed loss. The cart mechanism feeding system prevents the spread of the feed and provides equal feed distribution. Feeders are for each floor and are remounted together via a column. Each feed bucket has a direction channel . Thanks to these channels the feed from the helix is distributed in equal quantities. The working time of the feed car can be adjusted at a time clock.



**AZ1200 & AZ1000** chick rearing cage is designed to prevent the fall of feed in to the eyes and mixing in to the fertilizer . Chicks can be feed from the holes measuring 30x40 mm on the feeder from the first day they were born. The feed adjustment plate located in front of these holes is easily adjusted by a handle along the battery and it allows to feed the chicks from the first until the last day.

## WATERING SYSTEM

In AZ1000 & AZ1200 pullet rearing cage, there are 2 different water lines on every level. There are 3 steel in AZ1000 model and 4 steel nipples in AZ1200 model attached for every cell. Steel nipples are protected against dripping and leakage. The middle nipple is 360° moveable exercise nipple. Water tanks placed at the front group of the battery are produced with double outlets for AZ1000 & AZ1200 pullet rearing cages. Water entry and exit holes are wide, thus no blockage occurs.

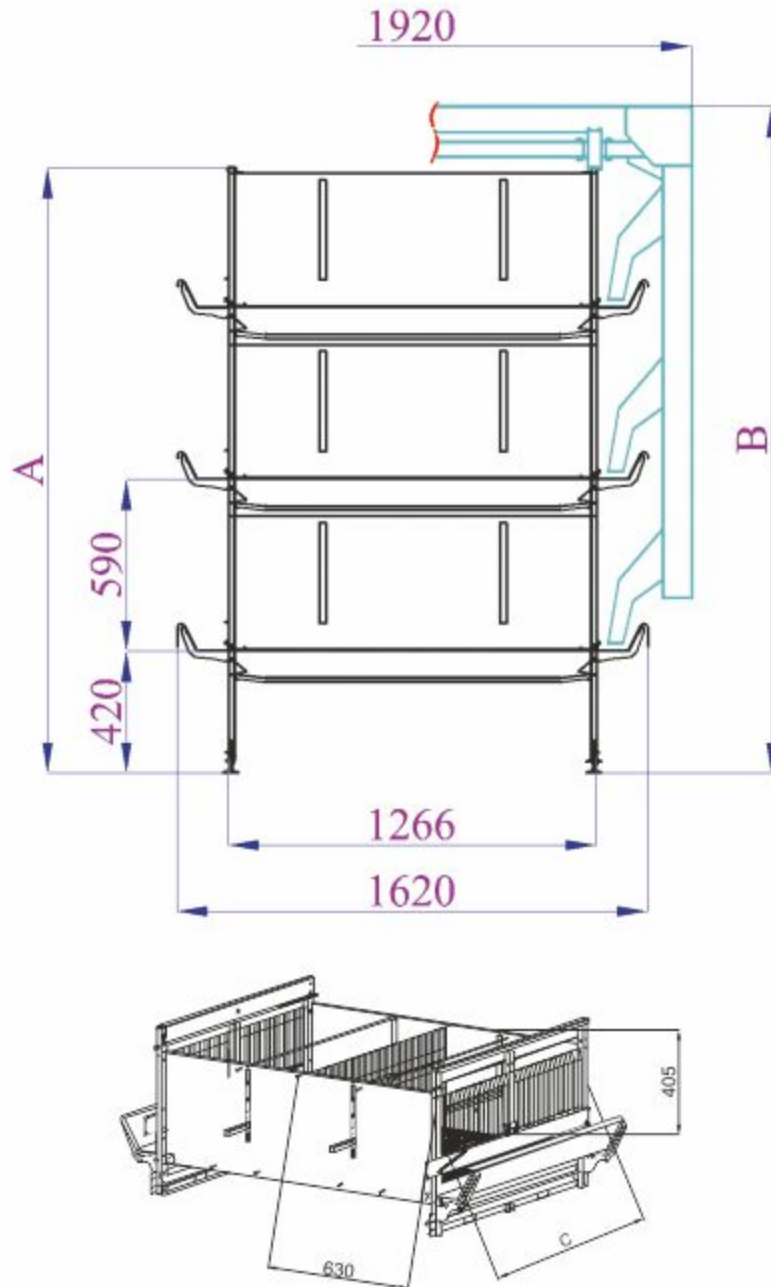


## **MANURE REMOVAL SYSTEM**

Manure bands with tightly connected polypropylene collect the manure under all cells at every level. Band is tear and heat proof itself. These bands are operated with steel drums. This durable mechanism provides manure dispatch for longer periods and distances. When the bands are operated, the manure drops on the V type manure carrying band through the scraper. Pressure rolls prevent the stretching only when the bands are operated. With solid watering system and cage construction drier manure is obtained. Vertical and horizontal manure conveyors placed at the back of the cage provide the manure to be dispatched out of the cage.



## CAGE MEASUREMENTS



AZ1000 & AZ1200	TIERS	A	B	C	MODEL
	3 TIERS	2080	2290	1000	AZ1000
	4 TIERS	2670	2880		
	5 TIERS	3260	3470	1200	AZ1200
6 TIERS	3850	4060			



**AZİM-TAV MAKİNE HAYVANCILIK GIDA İNŞ. NAKL. SAN. TIC. LTD. STİ.**  
Company Center : Atatürk Mahallesi Eski Manisa Yolu No: 160-4  
Turgutlu / Manisa / TURKEY



+90 (236) 312 94 79



+90 (236) 312 94 80



+90 (530) 666 88 10



+90 (530) 392 50 15



info@azim-tav.com.tr



www.azim-tav.com.tr

